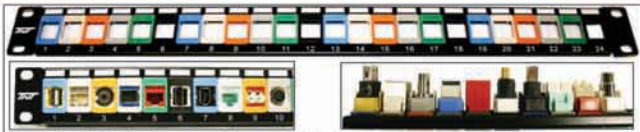


**FEATURES:**

- Compact design fit into any keystone jack cutout
- Design for multimedia wallplate or feed-thru panel
- Up to six modules can be snapped in a single gang decora faceplate
- Available in multi color solution
- 19 inches panel - 24 ports in 1u/1.75 inches height, 48 ports in 2u/3.5 inches height

YY = Color WH GY BK BL GN RD OR YL IV

**HIGH DENSITY MULTIMEDIA BLANK PANEL**







\*Bezel and Modules are sold separately

PART NUMBER	DESCRIPTION	1-4	5-9	10+
015B-024B	24 ports, blank panel	\$15.75	\$15.04	\$13.96
015B-048B	48 ports, blank panel	\$21.12	\$20.16	\$18.72

**AUDIO / VIDEO**

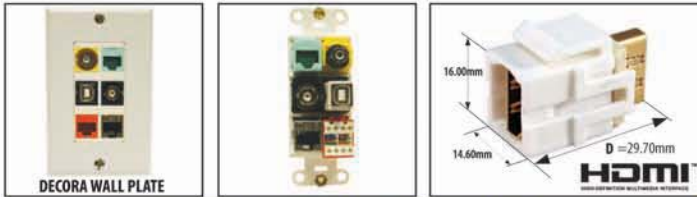
HDMI	RCA	S-Video	F-Type	
 1.17" D=29.70mm 071D-HDMI-YY	 1.42" D=32.80mm 071D-RCA-YY	 1.44" D=36.50mm 071D-MDIN4-YY	 1.21" D=31.00mm 071D-IFF-S-YY	
BNC	3.5mm Audio	Banana Plugs	Speaker Terminal	
 1.27" D=32.20mm 071D-IBN-YY	 1.30" D=36.00mm 071D-35M-YY	 1.45" D=36.80mm 071D-BANA-YY	 1.64" D=41.62mm 071D-SP-YY	
PART NUMBER	DESCRIPTION	1-49	50-99	100+
071D-HDMI-YY	HDMI	\$4.40	\$4.20	\$3.90
071D-RCA-YY	RCA	\$2.20	\$2.10	\$1.95
071D-MDIN4-YY	S-Video	\$2.64	\$2.52	\$2.34
071D-IFF-S-YY	F-Type	\$1.41	\$1.34	\$1.25
071D-IBN-YY	BNC	\$2.20	\$2.10	\$1.95
071D-35M-YY	3.5mm Audio Jack	\$2.64	\$2.52	\$2.34
071D-BANA-YY	Banana Jack	\$3.08	\$2.94	\$2.73
071D-SP-YY	Speaker Terminal	\$2.20	\$2.10	\$1.95

**FIBER OPTIC**

LC (Duplex)	SC	ST	MTRJ	
 1.37" D=34.80mm 071D-DLC-YY	 1.31" D=33.20mm 071D-ISC-YY	 1.265" D=32.00mm 071D-IST-YY	 1.33" D=33.60mm 071D-MTRJ-YY	
PART NUMBER	DESCRIPTION	1-49	50-99	100+
071D-DLC-YY	LC (Duplex)	\$5.98	\$5.71	\$5.30
071D-ISC-YY	SC	\$3.34	\$3.19	\$2.96
071D-IST-YY	ST	\$3.34	\$3.19	\$2.96
071D-MTRJ-YY	MTRJ	\$5.28	\$5.04	\$4.68

**USB & FIREWIRE**

USB Type-A	USB Type-B	6-Pin Firewire	4-Pin Firewire	
 1.6" D=40.60mm 071D-USBA-YY	 1.62" D=41.00mm 071D-USBB-YY	 1.62" D=41.00mm 071D-FW-YY	 1.36" D=34.60mm 071D-FWM-YY	
PART NUMBER	DESCRIPTION	1-49	50-99	100+
071D-USBA-YY	USB-A/A	\$2.20	\$2.10	\$1.95
071D-USBB-YY	USB-B/B	\$2.20	\$2.10	\$1.95
071D-FW-YY	6 Pin Firewire	\$2.64	\$2.52	\$2.34
071D-FWM-YY	4-Pin Firewire	\$2.64	\$2.52	\$2.34



**DECORA SINGLE GANG FACEPLATES**

07X-101-ZZ	07X-102-ZZ	07X-103-ZZ	07X-104-ZZ	07X-106-ZZ	07X-F-1-ZZ
ZZ = color IV: Ivory, WH: White					
PART NUMBER	DESCRIPTION	1-49	50-99	100+	
07X-101-ZZ	1 Port	\$0.69	\$0.66	\$0.61	
07X-102-ZZ	2 Ports	\$0.69	\$0.66	\$0.61	
07X-103-ZZ	3 Ports	\$0.69	\$0.66	\$0.61	
07X-104-ZZ	4 Ports	\$0.86	\$0.82	\$0.76	
07X-106-ZZ	6 Ports	\$0.86	\$0.82	\$0.76	
07X-F-1-ZZ	Cover Plate	\$0.51	\$0.49	\$0.45	

**VOICE & LAN**

Cat6a Shielded Coupler	Cat6a Coupler	Cat6a Keystone Jack 90°	Cat6a Keystone Jack 180°	
 1.18" D=32.00mm 080-885-SI-C6A-SH	 1.21" D=30.80mm 080-885-SI-C6A	 1.30" D=31.20mm 07WF-188-M-C6A	 1.22" D=32.60mm 07WF-188-M-C6A	
Cat6 Shielded Coupler	Cat6 Coupler	Cat6 Keystone Jack 90°	Cat6 Keystone Jack 180°	
 1.18" D=30.00mm 080-885-C6-SI-SH	 1.16" D=29.30mm 080-885-SI-C6	 1.23" D=31.20mm 07WF-188-YY-M	 1.45" D=32.80mm 07WF-188-YY-M	
Cat5e Shielded Coupler	Cat5e Coupler	Cat5e Keystone Jack 90°	Cat5e Keystone Jack 180°	
 1.18" D=30.00mm 080-C5E-SI-SH-M	 1.16" D=29.40mm 080-885-C5-M	 1.21" D=30.70mm 07F-188-YY-M	 1.45" D=32.80mm 07F-188-YY-M	
RJ-12 Keystone Jack 90°	RJ-12 Snap-In Coupler	RJ-45 Snap-In Coupler		
 1.22" D=31.00mm 07F-166-YY-M	 1.06" D=26.96mm 080-665-SI	 1.06" D=26.96mm 080-885-SI		
PART NUMBER	DESCRIPTION	1-49	50-99	100+
080-885-SI-C6A-SH	Cat6a Shielded Coupler	\$9.24	\$8.82	\$8.19
080-885-SI-C6A	Cat6a Coupler	\$6.51	\$6.22	\$5.77
07WF-188-M-C6A	Cat6a Keystone Jack 90°	\$6.16	\$5.88	\$5.46
07WF-188-M-C6A	Cat6a Keystone Jack 180°	\$6.51	\$6.22	\$5.77
080-885-C6-SI-SH	Cat6 Shielded Coupler	\$6.95	\$6.64	\$6.16
080-885-SI-C6	Cat6 Coupler	\$5.90	\$5.63	\$5.23
07WF-188-YY-M	Cat6 Keystone Jack 90°	\$5.63	\$5.38	\$4.99
07WF-188-YY-M	Cat6 Keystone Jack 180°	\$5.98	\$5.71	\$5.30
080-C5E-SI-SH-M	Cat5e Shielded Coupler	\$4.75	\$4.54	\$4.21
080-885-C5-M	Cat5e Coupler	\$3.87	\$3.70	\$3.43
07F-188-YY-M	Cat5e Keystone Jack 90°	\$2.46	\$2.35	\$2.18
07F-188-YY-M	Cat5e Keystone Jack 180°	\$2.64	\$2.52	\$2.34
07F-166-YY-M	RJ-12 Keystone Jack 90°	\$1.94	\$1.85	\$1.72
080-665-SI	RJ-12 Snap-In Coupler	\$1.76	\$1.68	\$1.56
080-885-SI	RJ-45 Snap-In Coupler	\$1.67	\$1.60	\$1.46

**ACCESSORIES**

Mini Snap-in Bezel	Blank Insert Module			
 073B-ALL-YY	 0.74" D=18.80mm 071D-IS-XX			
XX = color IV: Ivory, WH: White, BK: Black				
PART NUMBER	DESCRIPTION	1-49	50-99	100+
073B-ALL-YY	Mini Snap-in Bezel	\$0.18	\$0.17	\$0.16
071D-IS-XX	Blank Insert Module	\$0.28	\$0.27	\$0.25